

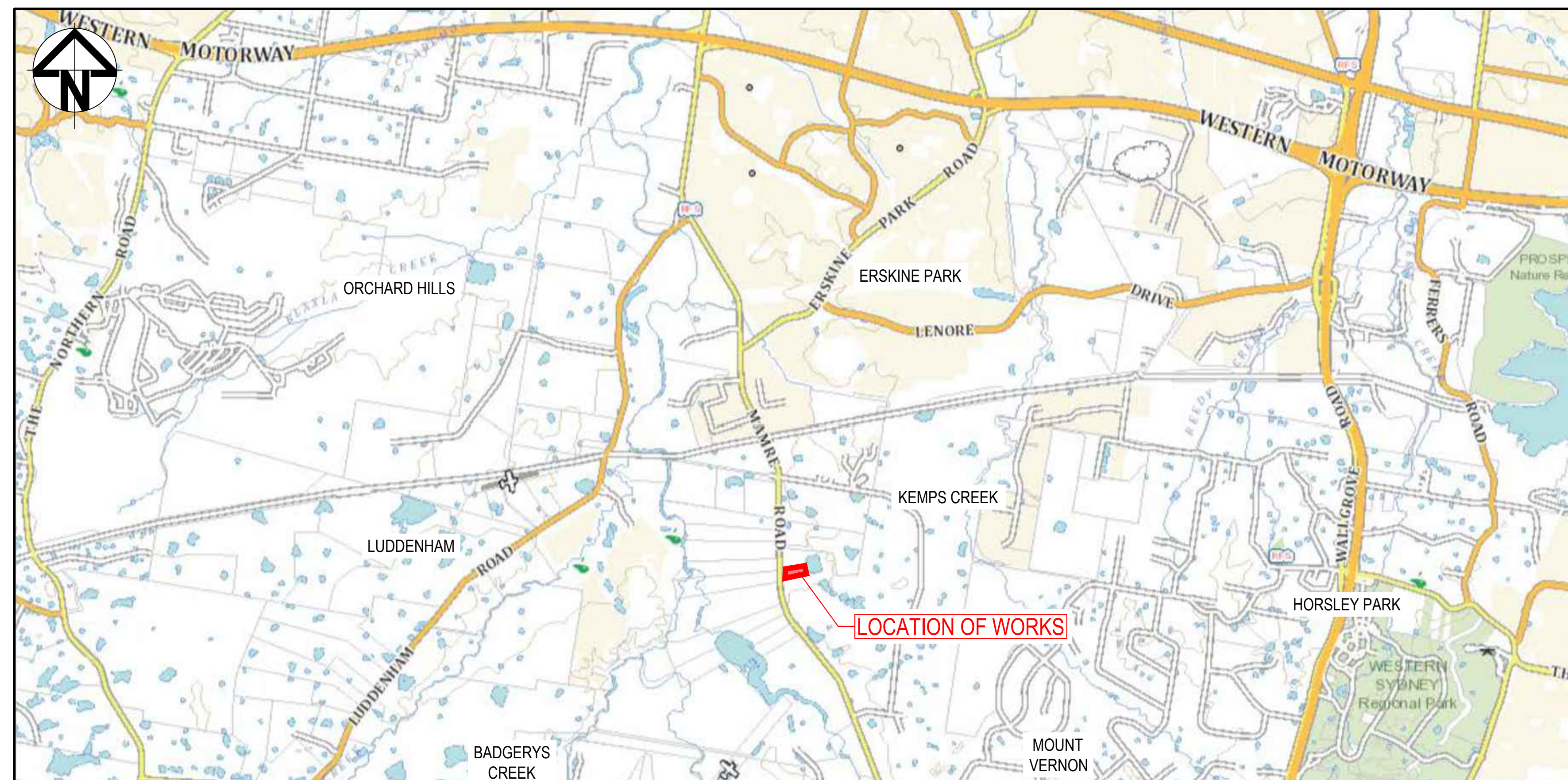
ASPECT INDUSTRIAL ESTATE

LOT 7 CIVIL WORKS PACKAGE



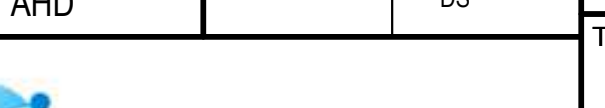
DEVELOPMENT APPLICATION

DRAWING LIST

DRAWING NO.	DRAWING TITLE
CV-AIE..B07.DA.2700-AT&L	COVER SHEET LOCALITY PLAN AND DRAWING LIST
CV-AIE..B07.DA.2702-AT&L	GENERAL NOTES AND LEGENDS
CV-AIE..B07.DA.2703-AT&L	GENERAL ARRANGEMENT PLAN
CV-AIE..B07.DA.2710-AT&L	TYPICAL SITE SECTIONS SHEET 1
CV-AIE..B07.DA.2711-AT&L	TYPICAL SITE SECTIONS SHEET 2
CV-AIE..B07.DA.2712-AT&L	SITE ELEVATIONS
CV-AIE..B07.DA.2740-AT&L	SITEWORKS AND STORMWATER DRAINAGE SHEET 1
CV-AIE..B07.DA.2741-AT&L	SITEWORKS AND STORMWATER DRAINAGE SHEET 2
CV-AIE..B07.DA.2750-AT&L	PAVEMENT PLAN
CV-AIE..B07.DA.2760-AT&L	BULK EARTHWORKS CUT/FILL PLAN
CV-AIE..B07.DA.2770-AT&L	EROSION AND SEDIMENT CONTROL PLAN
CV-AIE..B07.DA.2771-AT&L	EROSION AND SEDIMENT CONTROL DETAILS



LOCALITY PLAN
NOT TO SCALE

			Bar Scales	THIS DRAWING CANNOT BE COPIED OR REPRODUCED IN ANY FORM OR USED FOR ANY OTHER PURPOSE OTHER THAN THAT ORIGINALLY INTENDED WITHOUT THE WRITTEN PERMISSION OF AT&L	Client <div></div>	<div>Scales</div> <div>NTS</div>	<div>Drawn</div> <div>JB</div>	Project ASPECT INDUSTRIAL ESTATE MAMRE ROAD, KEMPS CREEK LOT 7	Civil Engineers and Project Managers <div></div> <div>Level 7, 153 Walker Street North Sydney NSW 2060 ABN 96 130 882 405 Tel: 02 9439 1777 Fax: 02 9923 1055 www.atl.net.au info@atl.net.au</div>	
							<div>Designed</div> <div>JB</div>			
							<div>Grid</div> <div>MGA</div>	<div>Checked</div> <div>NT</div>		Title COVER SHEET LOCALITY PLAN AND DRAWING LIST
							<div>Height Datum</div> <div>AHD</div>	<div>Approved</div> <div>DS</div>		
D	ISSUED FOR DA APPROVAL	11-10-24								<div></div>
C	ISSUED FOR DA APPROVAL	10-10-24								
B	ISSUED FOR DA APPROVAL	26-02-24								
A	ISSUED FOR DA APPROVAL	01-02-24								
Issue	Description	Date						<div>Status</div> <div>FOR DA APPROVAL</div> <div>NOT TO BE USED FOR CONSTRUCTION</div>	<div>A1</div>	
Project - Drawing No. CV-AIE.B07.DA.2700-AT&L(D)										

1. ORIGIN OF LEVELS- REFER SURVEY NOTES.
2. CONTRACTOR MUST VERIFY ALL DIMENSIONS AND EXISTING LEVELS ON SITE PRIOR TO COMMENCEMENT OF WORK. ANY DISCREPANCIES TO BE REPORTED TO AT & L.
3. MAKE SMOOTH CONNECTION WITH EXISTING WORKS.
4. ALL TRENCH BACKFILL MATERIAL SHALL BE COMPACTED TO THE SAME DENSITY AS THE ADJACENT MATERIAL.
5. ALL SERVICE TRENCHES UNDER VEHICULAR PAVEMENTS SHALL BE BACKFILLED TO 300mm ABOVE PIPE. WHERE PIPE IS UNDER PAVEMENTS BACKFILL REMAINDER OF TRENCH TO UNDERSIDE OF PAVEMENT WITH SAND OR APPROVED GRANULAR MATERIAL COMPACTED IN 150mm LAYERS TO MINIMUM 98% MODIFIED MAXIMUM DRY DENSITY IN ACCORDANCE WITH AS 1289 5.2.1. (OR A DENSITY INDEX OF NOT LESS THAN 75)
6. PROVIDE 10mm WIDE EXPANSION JOINTS BETWEEN BUILDINGS AND ALL CONCRETE OR UNIT PAVEMENTS.
7. ASPHALTIC CONCRETE SHALL CONFORM TO R.M.S SPECIFICATION R116.
8. ALL BASECOURSE MATERIAL SHALL BE IGNEOUS ROCK QUARRIED MATERIAL TO COMPLY WITH R.M.S FORM 3051 (UNBOUND), R.M.S FORM 3052 (BOUND) COMPLY WITH R.M.S FORM 3051 & 3052 MODIFIED DENSITY IN ACCORDANCE WITH AS 1289 5.2. FREQUENCY OF COMPACTION TESTING SHALL NOT BE LESS THAN 1 TEST PER 50m OF BASECOURSE MATERIAL PLACED.
9. ALL SUB-BASE COURSE MATERIAL SHALL BE IGNEOUS ROCK QUARRIED MATERIAL TO COMPLY WITH R.M.S FORM 3051, 3051.1 AND COMPACTED TO MINIMUM 98% MODIFIED DENSITY IN ACCORDANCE WITH AS 1289 5.2.1. FREQUENCY OF COMPACTION TESTING SHALL NOT BE LESS THAN 1 TEST PER 50m OF SUB-BASE COURSE MATERIAL PLACED.
10. AS AN ALTERNATIVE TO THE USE OF IGNEOUS ROCK AS A SUB-BASE MATERIAL IN (9) A CERTIFIED RECYCLED CONCRETE MATERIAL COMPLYING WITH R.M.S FORM 3051 AND 3051.1 WILL BE CONSIDERED. SUBJECT TO MATERIAL SAMPLES AND APPROPRIATE CERTIFICATIONS BEING PROVIDED TO THE SATISFACTION OF AT & L.
11. SHOULD THE CONTRACTOR WISH TO USE A RECYCLED PRODUCT THE CONTRACTOR IS TO SEEK ACCEPTANCE OF THE PRODUCT FROM AT&L. THE PRICE DIFFERENCE BETWEEN AN IGNEOUS PRODUCT AND A RECYCLED PRODUCT SHALL BE CLEARLY INDICATED.
12. WHERE NOTED ON THE DRAWINGS THAT WORKS ARE TO BE CARRIED BY OTHERS, (eg. ADJUSTMENT OF SERVICES), THE CONTRACTOR SHALL BE RESPONSIBLE FOR THE CO-ORDINATION OF THESE WORKS.
13. ALL WORKS CARRIED OUT ADJACENT TO AND WITHIN TRANSGRID'S EASEMENT TO COMPLY WITH TRANSGRID'S GUIDELINES AND REQUIREMENTS.
14. ALL WORKS TO BE CONSTRUCTED IN ACCORDANCE WITH PENRITH CITY COUNCIL'S ENGINEERING CONSTRUCTION SPECIFICATION FOR CIVIL WORKS.

THE LOCATIONS OF UNDERGROUND SERVICES SHOWN IN THIS SET OF DRAWINGS HAVE BEEN PLOTTED FROM SURVEY INFORMATION AND SERVICE AUTHORITY INFORMATION. THE SERVICE INFORMATION HAS BEEN PREPARED ONLY TO SHOW THE APPROXIMATE POSITIONS OF ANY KNOWN SERVICES AND MAY NOT BE AS CONSTRUCTED OR ACCURATE.

AT & L CAN NOT GUARANTEE THAT THE SERVICES INFORMATION SHOWN ON THESE DRAWINGS ACCURATELY INDICATES THE PRESENCE OR ABSENCE OF SERVICES OR THEIR LOCATION AND WILL ACCEPT NO LIABILITY FOR INACCURACIES IN THE SERVICES INFORMATION SHOWN FROM ANY CAUSE WHATSOEVER.

CONTRACTORS MUST TAKE DUE CARE WHEN EXCAVATING ONSITE INCLUDING HAND EXCAVATION WHERE NECESSARY.

CONTRACTORS ARE TO CONTACT THE RELEVANT SERVICE AUTHORITY PRIOR TO COMMENCEMENT OF EXCAVATION WORKS.

CONTRACTORS ARE TO UNDERTAKE A SERVICES SEARCH, PRIOR TO COMMENCEMENT OF WORKS ON SITE. SEARCH RESULTS ARE TO BE KEPT ON SITE AT ALL TIMES.

PRIOR TO COMMENCEMENT OF WORKS, THE CONTRACTOR IS TO CONFIRM THE ALIGNMENT AND LEVELS OF ALL EXISTING SERVICES AT ALL LOCATIONS WHERE THE PROPOSED SERVICES ARE TO CROSS, CONNECT TO, OR ARE LOCATED IN CLOSE PROXIMITY TO THE EXISTING SERVICES.

ALL CONCRETE TO HAVE A MINIMUM COMPRESSIVE STRENGTH OF 25 MPa U.N.O IN REINFORCED CONCRETE NOTES.

1. ALL KERBS, GUTTERS, DISH DRAINS AND CROSSINGS TO BE CONSTRUCTED ON MIN. 100mm GRANULAR BASECOURSE COMPACTED TO MINIMUM 95% MODIFIED DRY DENSITY (AS 1289 5.2.1).

2. EXPANSION JOINTS (E.J.) TO BE FORMED FROM 10mm COMPRESSIBLE CORK FILLER BOARD TO THE FULL DEPTH OF THE SECTION AND CUT TO PROFILE. EXPANSION JOINTS TO BE LOCATED AT DRAINAGE FITS, ON TANGENT PORTIONS OF CURVES AND ELSEWHERE AT MAX 12m CENTRES EXCEPT FOR INTEGRAL KERBS WHERE THE EXPANSION JOINTS ARE TO MATCH THE JOINT LOCATIONS IN THE SLABS.

3. WEAKENED PLANE JOINTS TO BE MIN 3mm WIDE AND LOCATED AT 3m CENTRES EXCEPT FOR INTEGRAL KERBS WHERE THE WEAKENED PLANE JOINTS ARE TO MATCH THE JOINT LOCATIONS IN THE SLABS.

4. BROOM FINISH TO ALL RAMPED AND VEHICULAR CROSSINGS. ALL OTHER KERBING OR DISH DRAINS TO BE STEEL FLOAT FINISHED.

5. IN THE REPLACEMENT OF KERB AND GUTTER :-
IF REQUIRED EXISTING ROAD PAVEMENT IS TO BE SAWCUT 900mm U.N.I FROM THE LIP OF GUTTER. UPON COMPLETION OF THE NEW KERB AND GUTTER, NEW BASECOURSE AND SURFACE TO BE LAID 900mm WIDE U.N.O.

1. THE CONTRACTOR IS RESPONSIBLE FOR ENGAGING A SUITABLY QUALIFIED EROSION AND SEDIMENT CONSULTANT FOR THE DURATION OF THE CONTRACT WITH THE EXPERTISE IN DESIGNING AND DOCUMENTING THE CONTROLS TO ALLOW THE INSTALLATION AND MAINTENANCE OF THE EROSION AND SEDIMENT CONTROLS. SUITABLE EROSION AND SEDIMENT CONTROLS SHALL BE PROVIDED AND MAINTAINED BY THE CONTRACTOR REQUIRED TO SUIT THE CONSTRUCTION STAGING
2. ALL WORK SHALL BE GENERALLY CARRIED OUT IN ACCORDANCE WITH
 - a. NSW DEPARTMENT OF HOUSING MANUAL "MANAGING URBAN STORMWATER, SOILS AND CONSTRUCTION", 4th EDITION, MARCH 2004.
 - b. LOCAL AUTHORITY REQUIREMENTS
 - c. EPA REQUIREMENTS
3. MAINTAIN THE EROSION CONTROL DEVICES TO THE SATISFACTION OF THE SUPERINTENDENT AND THE LOCAL AUTHORITY.
4. WHEN STORMWATER PITS ARE CONSTRUCTED, PREVENT SITE RUNOFF ENTERING UNLESS SEDIMENT FENCES ARE ERECTED AROUND PITS.
5. CONTRACTOR IS TO ENSURE ALL EROSION & SEDIMENT CONTROL DEVICES ARE MAINTAINED IN GOOD WORKING ORDER AND OPERATE EFFECTIVELY. REPAIRS AND OR MAINTENANCE SHALL BE UNDERTAKEN AS REQUIRED, PARTICULARLY FOLLOWING STORM EVENTS.

6. WHERE PRACTICAL, THE SOIL EROSION HAZARD ON THE SITE WILL BE KEPT AS LOW AS POSSIBLE. TO THIS END, WORKS SHOULD BE UNDERTAKEN / INSTALLED AS DIRECTED BY THE CONTRACTORS EROSION AND SEDIMENT CONTROL CONSULTANT.

7. DURING WINDY WEATHER, LARGE, UNPROTECTED AREAS WILL BE KEPT MOIST (NOT WET) BY SPRINKLING WITH WATER TO KEEP DUST UNDER CONTROL.
8. FINAL SITE LANDSCAPING WILL BE UNDERTAKEN AS SOON AS POSSIBLE AND WITHIN 20 WORKING DAYS FROM COMPLETION OF CONSTRUCTION ACTIVITIES.

9. STOCKPILES WILL NOT BE LOCATED WITHIN 2 METRES OF HAZARD AREAS, INCLUDING LIKELY AREAS OF CONCENTRATED OR HIGH VELOCITY FLOWS SUCH AS WATERWAYS. WHERE THEY ARE BETWEEN 2 AND 5 METRES FROM SUCH AREAS, SPECIAL SEDIMENT CONTROL MEASURES SHOULD BE TAKEN TO MINIMISE POSSIBLE POLLUTION TO DOWNSLOPE WATERS, E.G. THROUGH INSTALLATION OF SEDIMENT FENCING.
10. ANY SAND USED IN THE CONCRETE CURING PROCESS (SPREAD OVER THE SURFACE) WILL BE REMOVED AS SOON AS POSSIBLE AND WITHIN 10 WORKING DAYS FROM PLACEMENT.
11. WATER WILL BE PREVENTED FROM ENTERING THE PERMANENT DRAINAGE SYSTEM UNLESS IT IS RELATIVELY SEDIMENT FREE, I.E. THE CATCHMENT AREA HAS BEEN PERMANENTLY LANDSCAPED AND/OR ANY LIKELY SEDIMENT HAS BEEN FILTERED THROUGH AN APPROVED STRUCTURE.
12. TEMPORARY SOIL AND WATER MANAGEMENT STRUCTURES WILL BE REMOVED ONLY AFTER THE LANDS THEY ARE PROTECTING ARE REHABILITATED.

13. ACCEPTABLE RECEPTORS WILL BE PROVIDED FOR CONCRETE AND MORTAR SLURRIES, PAINTS, ACID WASHINGS, LIGHT-WEIGHT WASTE MATERIALS AND LITTER.

14. ANY EXISTING TREES WHICH FORM PART OF THE FINAL LANDSCAPING PLAN WILL BE PROTECTED FROM CONSTRUCTION ACTIVITIES BY:

- (A) PROTECTING THEM WITH BARRIER FENCING OR SIMILAR MATERIALS INSTALLED OUTSIDE THE DRIP LINE
- (B) ENSURING THAT NOTHING IS NAILED TO THEM
- (C) PROHIBITING PAVING, GRADING, SEDIMENT WASH OR PLACING OF STOCKPILES WITHIN THE DRIP LINE EXCEPT UNDER THE FOLLOWING CONDITIONS:
 - (I) ENCROACHMENT ONLY OCCURS ON ONE SIDE AND NO CLOSURE TO THE TRUNK THAN EITHER 1.5 METRES OR HALF THE DISTANCE BETWEEN THE OUTER EDGE OF THE DRIP LINE AND THE TRUNK, WHICHEVER IS THE GREATER
 - (II) A DRAINAGE SYSTEM THAT ALLOWS AIR AND WATER TO CIRCULATE THROUGH THE ROOT ZONE (E.G. A GRAVEL BED) IS PLACED UNDER ALL FILL LAYERS OF MORE THAN 300 MILLIMETRES DEPTH
 - (III) CARE IS TAKEN NOT TO CUT ROOTS UNNECESSARILY NOR TO COMPACT THE SOIL AROUND THEM.

SUBTLE EROSION AND SEDIMENT CONTROLS SHALL BE PROVIDED AND MAINTAINED BY THE CONTRACTOR THROUGHOUT ALL STAGES OF WORKS, THROUGHOUT THE FULL TERM OF THE CONTRACT, WHERE SHOWN ON AT&L DRAWINGS OR WHERE DIRECTED BY THE SUPERINTENDENT OR PENRITH CITY COUNCIL'S ENGINEERS. THE CONTRACTOR IS RESPONSIBLE FOR DESIGNING, DOCUMENTING, INSTALLING AND MAINTAINING THE SEDIMENT AND EROSION CONTROLS REQUIRED TO SUIT THE SELECTED CONSTRUCTION STAGING. THIS IS TO BE DOCUMENTED IN THE FORM OF A SOIL AND WATER MANAGEMENT PLAN TO BE DEVELOPED BY THE CONTRACTOR AND THEIR EROSION NO SEDIMENT CONSULTANT AND PROVIDED BY THE SUPERINTENDENT PRIOR TO CONSTRUCTION COMMENCEMENT.

1. ALL FINISHED SURFACE LEVELS ARE $\pm 1000\text{mm}$ U.N.O.

THE EXISTING SITE CONDITIONS SHOWN ON THE FOLLOWING DRAWINGS HAVE BEEN INVESTIGATED BY CARDINO HARD & FORESTER PTY LTD AND LAND PARTNERS PTY LTD, BEING REGISTERED SURVEYORS. THE INFORMATION IS SHOWN TO PROVIDE A BASIS FOR DESIGN. AT & L DOES NOT GUARANTEE THE ACCURACY OR COMPLETENESS OF THE SURVEY BASE OR ITS SUITABILITY AS A BASIS FOR CONSTRUCTION DRAWINGS. PRIOR TO THE COMMENCEMENT OF THE WORKS, THE CONTRACTOR SHALL UNDERTAKE A DETAILED BOUNDARY SURVEY AND COMPARE AGAINST THE DESIGN FOR DISCREPANCIES.

SHOULD DISCREPANCIES BE ENCOUNTERED DURING CONSTRUCTION BETWEEN THE SURVEY DATA, DESIGN DATA AND ACTUAL FIELD DATA, CONTACT AT & L IMMEDIATELY.

THE FOLLOWING NOTES HAVE BEEN TAKEN DIRECTLY FROM THE ORIGINAL SURVEY DOCUMENTS.

THE TITLE BOUNDARIES SHOWN HEREON WERE NOT MARKED AT THE TIME OF SURVEY AND HAVE BEEN DETERMINED BY PLAN DIMENSIONS ONLY AND NOT BY FIELD SURVEY.

SERVICES SHOWN HEREON HAVE BEEN LOCATED WHERE POSSIBLE BY FIELD SURVEY. IF NOT ABLE TO BE SO LOCATED, SERVICES HAVE BEEN PLOTTED FROM THE RECORDS OF RELEVANT AUTHORITIES WHERE AVAILABLE AND HAVE BEEN NOTED ACCORDINGLY ON THE PLAN. WHERE SUCH RECORDS DO NOT EXIST OR ARE INADEQUATE A NOTATION HAS BEEN MADE HEREON.

PRIOR TO ANY DEMOLITION, EXCAVATION OR CONSTRUCTION ON THE SITE, THE RELEVANT AUTHORITY SHOULD BE CONTACTED FOR POSSIBLE LOCATION OF FURTHER UNDERGROUND SERVICES AND DETAILED LOCATIONS OF ALL SERVICES.

1. IF REQUIRED ANY DEWATERING WORKS TO BE AS PER THE DEWATERING PROCEDURE AS CONTAINED WITHIN THE CONSTRUCTION ENVIRONMENTAL MANAGEMENT PLAN (CEMP).

1. ALL WORKMANSHIP AND MATERIALS SHALL BE IN ACCORDANCE WITH AS 3600 CURRENT EDITION WITH AMENDMENTS, EXCEPT WHERE VARIED BY THE CONTRACT DOCUMENTS.
2. CONCRETE QUALITY
ALL REQUIREMENTS OF THE CURRENT ACSE CONCRETE SPECIFICATION DOCUMENT 1 SHALL APPLY TO THE FORMWORK, REINFORCEMENT AND CONCRETE UNLESS NOTED OTHERWISE.

- CEMENT TYPE SHALL BE (ACSE SPECIFICATION) TYPE SL

PROJECT CONTROL TESTING SHALL BE CARRIED OUT IN ACCORDANCE WITH AS 1379.

NO ADMIXTURES SHALL BE USED IN CONCRETE UNLESS APPROVED
IN WRITING BY AT & L.

4. CLEAR CONCRETE COVER TO ALL REINFORCEMENT FOR DURABILITY SHALL BE 40mm TOP AND 70mm FOR EXTERNAL EDGES UNLESS NOTED OTHERWISE.

5. ALL REINFORCEMENT SHALL BE FIRMLY SUPPORTED ON MILD STEEL PLASTIC TIPPED CHAIRS, PLASTIC CHAIRS OR CONCRETE CHAIRS AT NOT GREATER THAN 1m CENTRES BOTH WAYS. BARS SHALL BE TIED AT ALTERNATE INTERSECTIONS.

6. THE FINISHED CONCRETE SHALL BE A DENSE HOMOGENEOUS MASS, COMPLETELY FILLING THE FORMWORK, THOROUGHLY EMBEDDING THE REINFORCEMENT AND FREE OF STONE POCKETS. ALL CONCRETE INCLUDING SLABS ON GROUND AND FOOTINGS SHALL BE COMPACTED AND CURED IN ACCORDANCE WITH R.M.S SPECIFICATION R83.

7. REINFORCEMENT SYMBOLS:

N DENOTES GRADE 450 N BARS TO AS 1302 GRADE N
R DENOTES 230 R HOT ROLLED PLAIN BARS TO AS 1302
SL DENOTES HARD-DRAWN WIRE REINFORCING FABRIC TO AS 1304

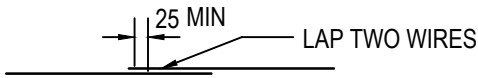
NUMBER OF BARS IN GROUP | BAR GRADE AND TYPE

17 N 20 250

NOMINAL BAR SIZE IN mm SPACING IN mm

THE FIGURE FOLLOWING THE FABRIC SYMBOL SL IS THE REFERENCE NUMBER FOR FABRIC TO AS 1304.

8. FABRIC SHALL BE LAPPED IN ACCORDANCE WITH THE FOLLOWING DETAIL:



B	ISSUED FOR DA APPROVAL	26-02-24
A	ISSUED FOR DA APPROVAL	01-02-24
Issue	Description	Date

Bar Scales

THIS DRAWING CANNOT BE
COPIED OR REPRODUCED IN
ANY FORM OR USED FOR ANY
OTHER PURPOSE OTHER THAN
THAT ORIGINALLY INTENDED
WITHOUT THE WRITTEN
PERMISSION OF AT&L



Client

Scales	NTS	Drawn	JB
		Designed	JB
Grid	MGA	Checked	NT
Height Datum	AHD	Approved	DS


GDA2020

Project
ASPECT INDUSTRIAL ESTATE
MAMRE ROAD,
KEMPS CREEK
LOT 7

GENERAL NOTES AND LEGENDS

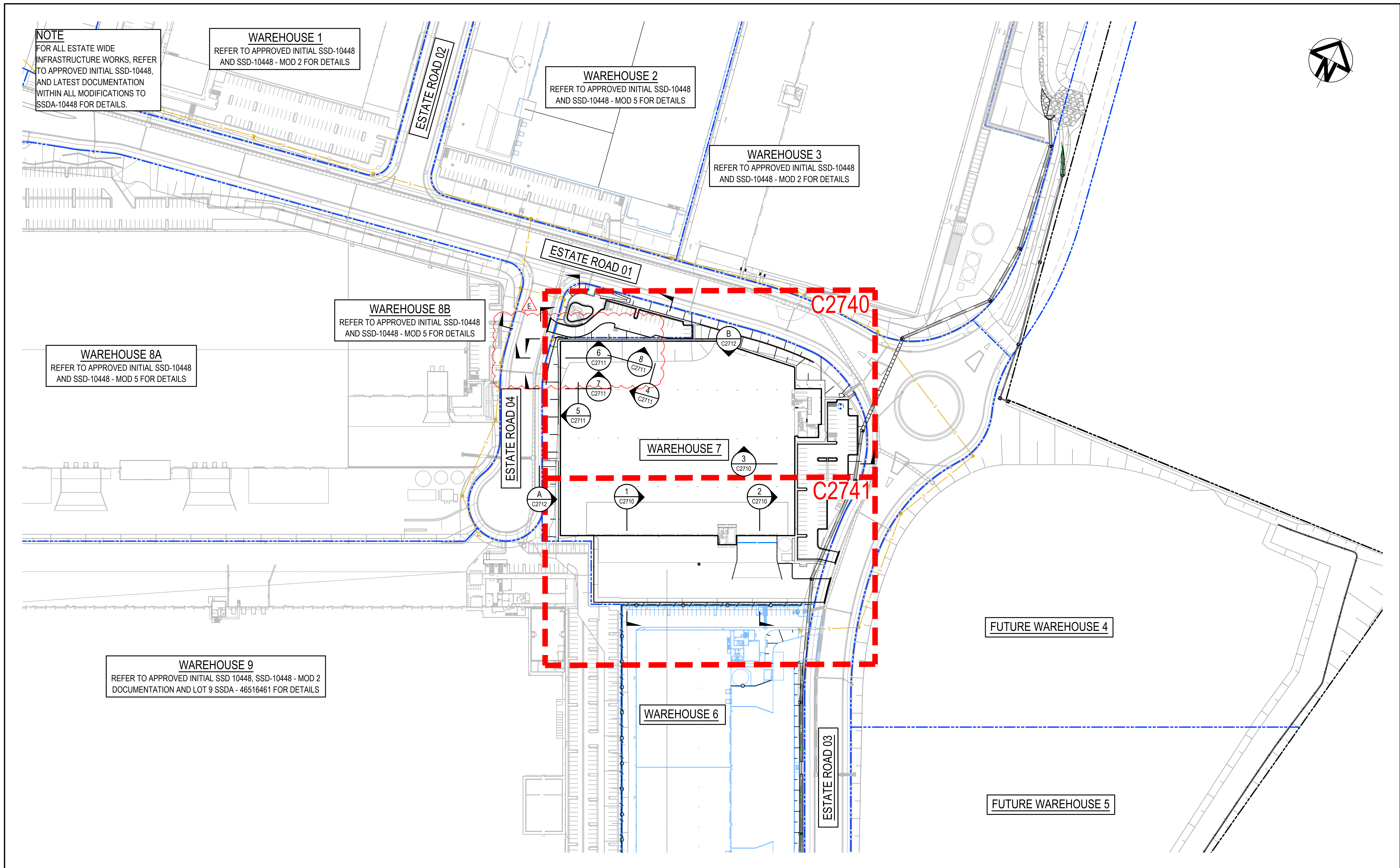
Civil Engineers and Project Managers



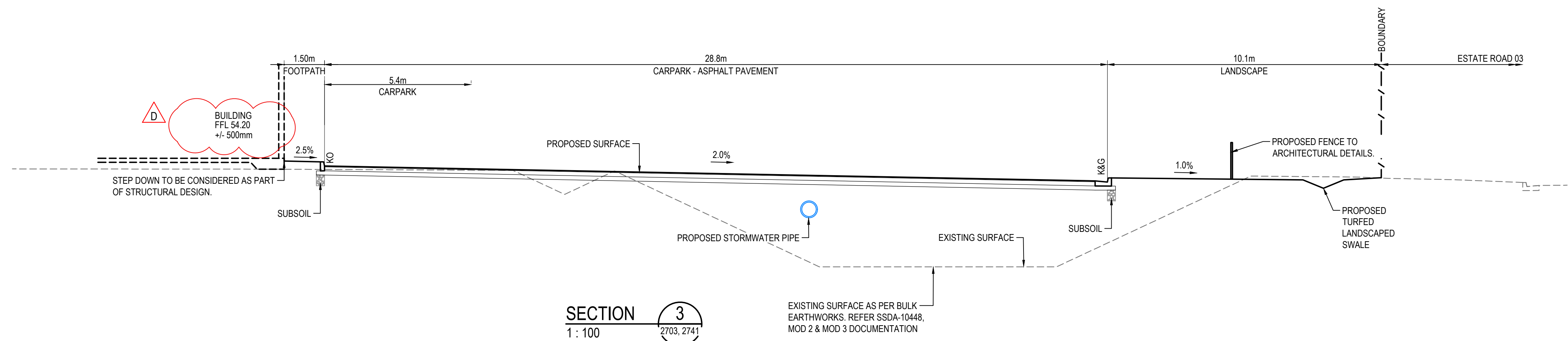
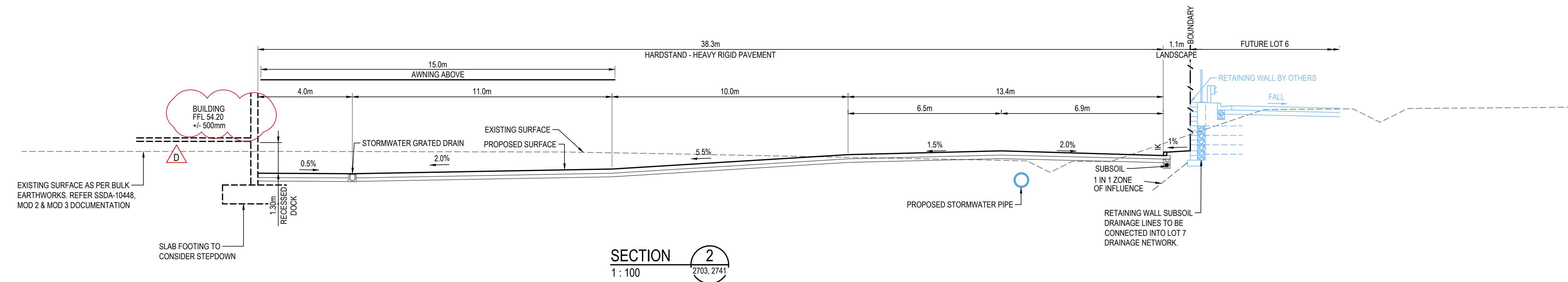
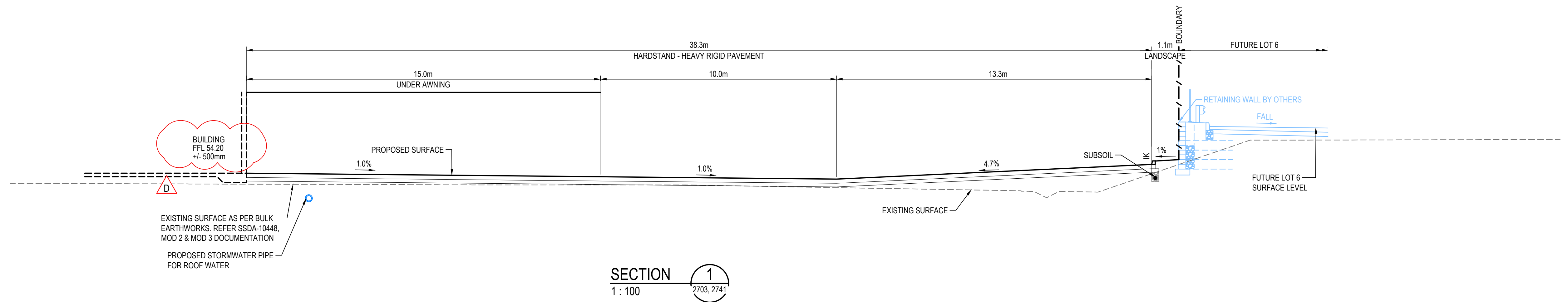
Level 7, 153 Walker Street
North Sydney NSW 2060
ABN 96 130 882 405
Tel: 02 9439 1777
Fax: 02 9923 1055
www.atl.net.au
info@atl.net.au

Status **FOR DA APPROVAL**
NOT TO BE USED FOR CONSTRUCTION

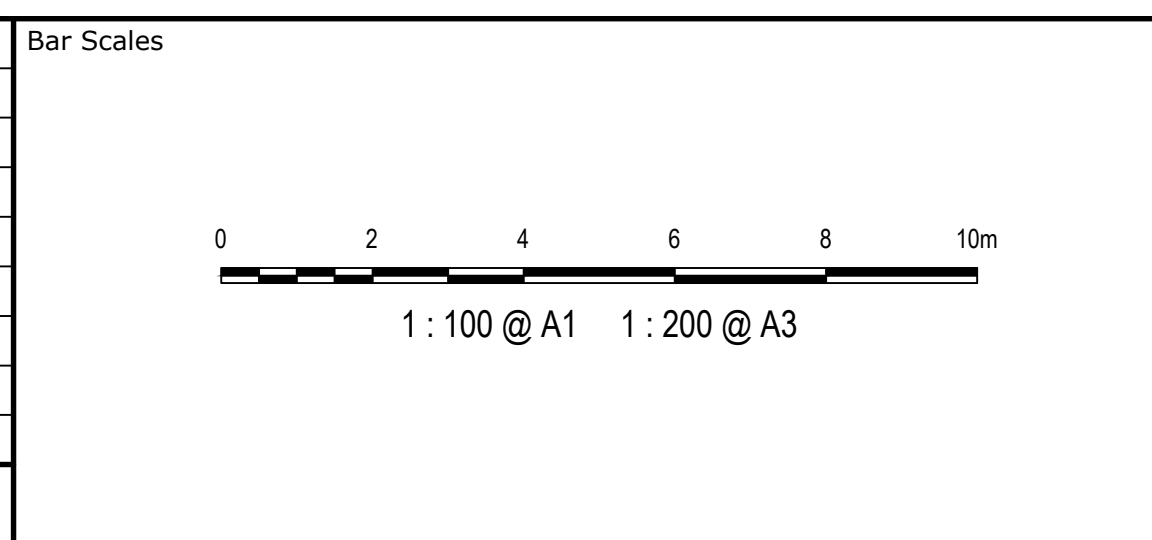
A1



			Bar Scales																																																																																																																																																																																																																																																																																																																																																																																																																																																																																																																																																																																																																																																																																																																																																																																																																																																																																																																																																																																																																																																																																																																																																																																																																																																																																																																																																																																																																																									
--	--	--	------------	--	--	--	--	--	--	--	--	--	--	--	--	--	--	--	--	--	--	--	--	--	--	--	--	--	--	--	--	--	--	--	--	--	--	--	--	--	--	--	--	--	--	--	--	--	--	--	--	--	--	--	--	--	--	--	--	--	--	--	--	--	--	--	--	--	--	--	--	--	--	--	--	--	--	--	--	--	--	--	--	--	--	--	--	--	--	--	--	--	--	--	--	--	--	--	--	--	--	--	--	--	--	--	--	--	--	--	--	--	--	--	--	--	--	--	--	--	--	--	--	--	--	--	--	--	--	--	--	--	--	--	--	--	--	--	--	--	--	--	--	--	--	--	--	--	--	--	--	--	--	--	--	--	--	--	--	--	--	--	--	--	--	--	--	--	--	--	--	--	--	--	--	--	--	--	--	--	--	--	--	--	--	--	--	--	--	--	--	--	--	--	--	--	--	--	--	--	--	--	--	--	--	--	--	--	--	--	--	--	--	--	--	--	--	--	--	--	--	--	--	--	--	--	--	--	--	--	--	--	--	--	--	--	--	--	--	--	--	--	--	--	--	--	--	--	--	--	--	--	--	--	--	--	--	--	--	--	--	--	--	--	--	--	--	--	--	--	--	--	--	--	--	--	--	--	--	--	--	--	--	--	--	--	--	--	--	--	--	--	--	--	--	--	--	--	--	--	--	--	--	--	--	--	--	--	--	--	--	--	--	--	--	--	--	--	--	--	--	--	--	--	--	--	--	--	--	--	--	--	--	--	--	--	--	--	--	--	--	--	--	--	--	--	--	--	--	--	--	--	--	--	--	--	--	--	--	--	--	--	--	--	--	--	--	--	--	--	--	--	--	--	--	--	--	--	--	--	--	--	--	--	--	--	--	--	--	--	--	--	--	--	--	--	--	--	--	--	--	--	--	--	--	--	--	--	--	--	--	--	--	--	--	--	--	--	--	--	--	--	--	--	--	--	--	--	--	--	--	--	--	--	--	--	--	--	--	--	--	--	--	--	--	--	--	--	--	--	--	--	--	--	--	--	--	--	--	--	--	--	--	--	--	--	--	--	--	--	--	--	--	--	--	--	--	--	--	--	--	--	--	--	--	--	--	--	--	--	--	--	--	--	--	--	--	--	--	--	--	--	--	--	--	--	--	--	--	--	--	--	--	--	--	--	--	--	--	--	--	--	--	--	--	--	--	--	--	--	--	--	--	--	--	--	--	--	--	--	--	--	--	--	--	--	--	--	--	--	--	--	--	--	--	--	--	--	--	--	--	--	--	--	--	--	--	--	--	--	--	--	--	--	--	--	--	--	--	--	--	--	--	--	--	--	--	--	--	--	--	--	--	--	--	--	--	--	--	--	--	--	--	--	--	--	--	--	--	--	--	--	--	--	--	--	--	--	--	--	--	--	--	--	--	--	--	--	--	--	--	--	--	--	--	--	--	--	--	--	--	--	--	--	--	--	--	--	--	--	--	--	--	--	--	--	--	--	--	--	--	--	--	--	--	--	--	--	--	--	--	--	--	--	--	--	--	--	--	--	--	--	--	--	--	--	--	--	--	--	--	--	--	--	--	--	--	--	--	--	--	--	--	--	--	--	--	--	--	--	--	--	--	--	--	--	--	--	--	--	--	--	--	--	--	--	--	--	--	--	--	--	--	--	--	--	--	--	--	--	--	--	--	--	--	--	--	--	--	--	--	--	--	--	--	--	--	--	--	--	--	--	--	--	--	--	--	--	--	--	--	--	--	--	--	--	--	--	--	--	--	--	--	--	--	--	--	--	--	--	--	--	--	--	--	--	--	--	--	--	--	--	--	--	--	--	--	--	--	--	--	--	--	--	--	--	--	--	--	--	--	--	--	--	--	--	--	--	--	--	--	--	--	--	--	--	--	--	--	--	--	--	--	--	--	--	--	--	--	--	--	--	--	--	--	--	--	--	--	--	--	--	--	--	--	--	--	--	--	--	--	--	--	--	--	--	--	--	--	--	--	--	--	--	--	--	--	--	--	--	--	--	--	--	--	--	--	--	--	--	--	--	--	--	--	--	--	--	--	--	--	--	--	--	--	--	--	--	--	--	--	--	--	--	--	--	--	--	--	--	--	--	--	--	--	--	--	--	--	--	--	--	--	--	--	--	--	--	--	--	--	--	--	--	--	--	--	--	--	--	--	--	--	--	--	--	--	--	--	--	--	--	--	--	--	--	--	--	--	--	--	--	--	--	--	--	--	--	--	--	--	--	--	--	--	--	--	--	--	--	--	--	--	--	--	--	--	--	--	--	--	--	--	--	--	--	--	--	--	--	--	--	--	--	--	--	--	--	--	--	--	--	--	--	--	--	--	--	--	--	--	--	--	--	--	--	--	--	--	--	--	--	--	--	--	--	--	--	--	--	--	--	--	--	--	--	--	--	--	--	--	--	--	--	--	--	--	--	--	--	--	--	--	--	--	--	--	--	--	--	--	--	--	--	--	--	--	--	--	--	--	--	--	--	--	--	--	--	--	--	--	--	--	--	--	--	--	--	--	--	--	--	--	--	--	--	--	--	--	--	--	--	--	--	--	--	--	--	--	--	--	--	--	--	--	--	--	--	--	--	--	--	--	--	--	--	--	--	--	--	--	--	--	--	--	--	--	--	--	--	--	--	--	--	--	--	--	--	--	--	--	--	--	--	--	--	--	--	--	--	--	--	--	--	--	--	--	--	--	--	--	--	--	--	--	--	--	--	--	--	--	--	--	--	--	--	--	--	--	--	--	--	--	--	--	--	--	--	--	--	--	--	--	--	--	--	--	--	--	--	--	--	--	--	--	--	--	--	--	--	--	--	--	--	--	--	--	--	--	--	--	--	--	--	--	--	--	--	--	--	--	--	--	--	--	--	--	--	--	--	--	--	--	--	--	--	--	--	--	--	--	--	--	--	--	--	--	--	--	--	--	--	--	--	--	--	--	--	--	--	--	--	--	--	--	--	--	--	--	--	--	--	--	--	--	--	--	--	--	--	--	--	--	--	--	--	--	--	--	--	--	--	--	--	--	--	--	--	--	--	--	--	--	--	--	--	--	--	--	--	--	--	--	--	--	--	--	--	--	--	--	--	--	--	--	--	--	--	--	--	--	--	--	--	--	--	--	--



Issue	Description	Date
D	ISSUED FOR DA APPROVAL	10-02-25
C	ISSUED FOR DA APPROVAL	18-09-24
B	ISSUED FOR DA APPROVAL	26-02-24
A	ISSUED FOR DA APPROVAL	01-02-24



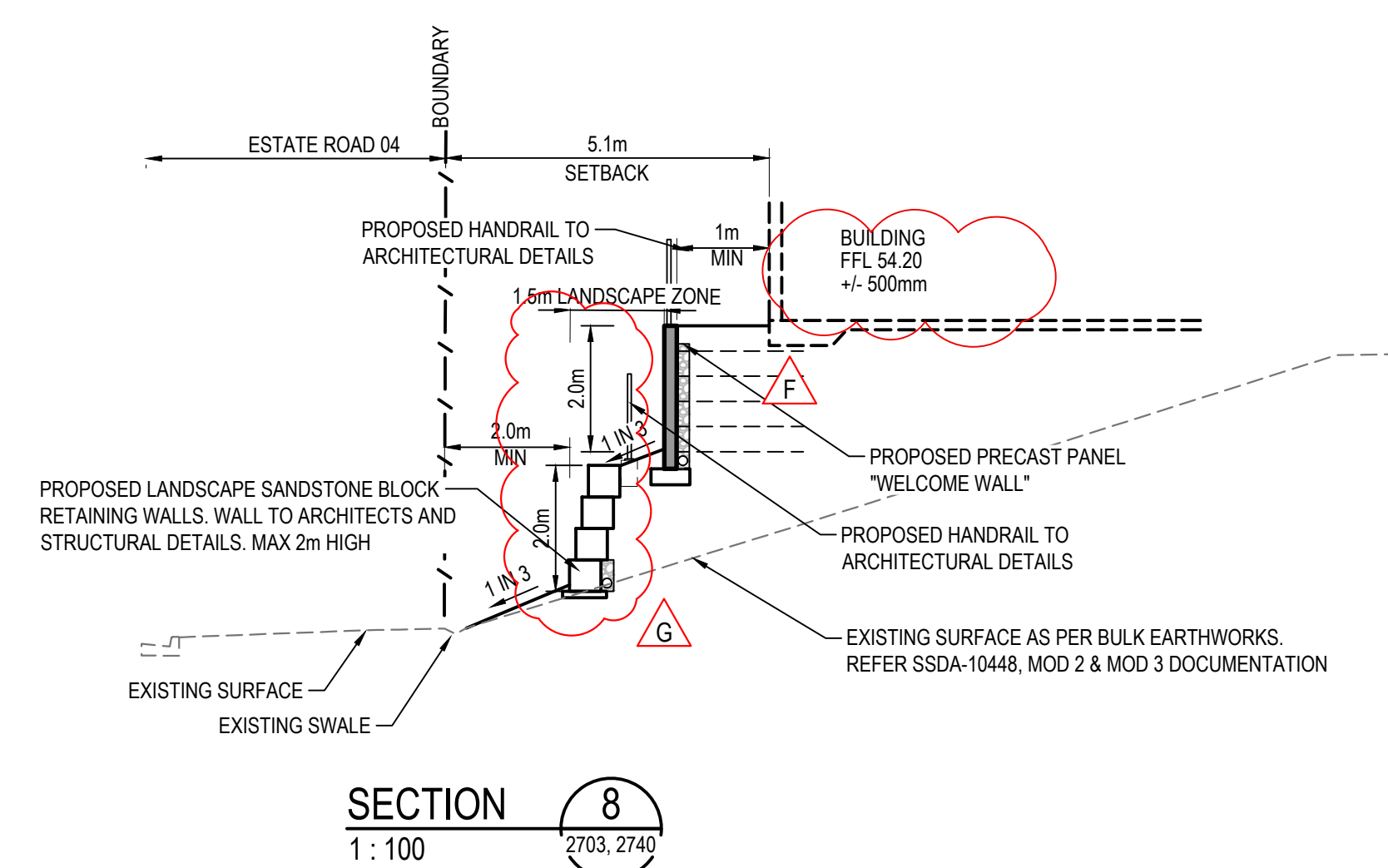
THIS DRAWING CANNOT BE COPIED OR REPRODUCED IN ANY FORM OR USED FOR ANY OTHER PURPOSE OTHER THAN THAT ORIGINALLY INTENDED WITHOUT THE WRITTEN PERMISSION OF AT&L




Scales	1:100	Drawn	JB
		Designed	JB
Grid	MGA	Checked	NT
Height Datum	AHD	Approved	DS

Project	ASPECT INDUSTRIAL ESTATE MAMRE ROAD, KEMPS CREEK LOT 7
Title	TYPICAL SITE SECTIONS SHEET 1

Civil Engineers and Project Managers	Level 7, 153 Walker Street North Sydney NSW 2060 ABN 96 130 882 405 Tel: 02 9439 1777 Fax: 02 9923 1055 www.atl.net.au info@atl.net.au
Status	FOR DA APPROVAL NOT TO BE USED FOR CONSTRUCTION
Project - Drawing No.	CV-AIE.B07.DA.2710-AT&L(D)
	A1



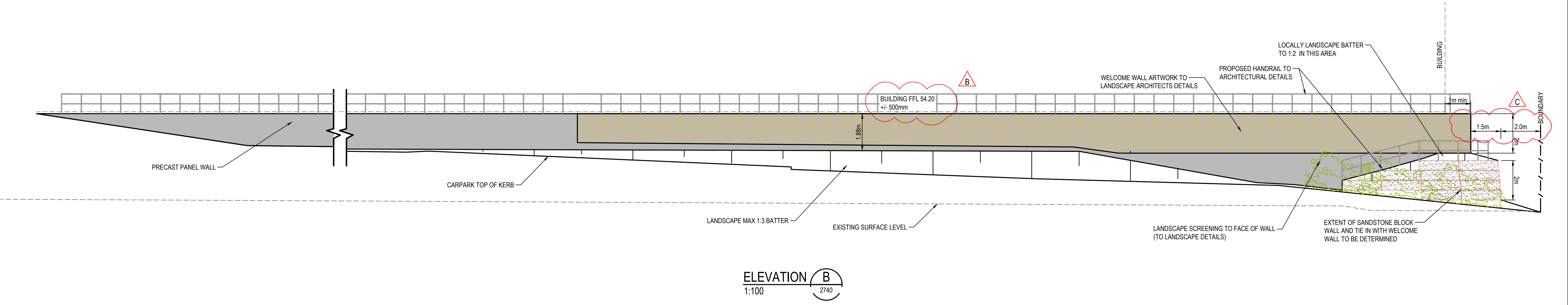
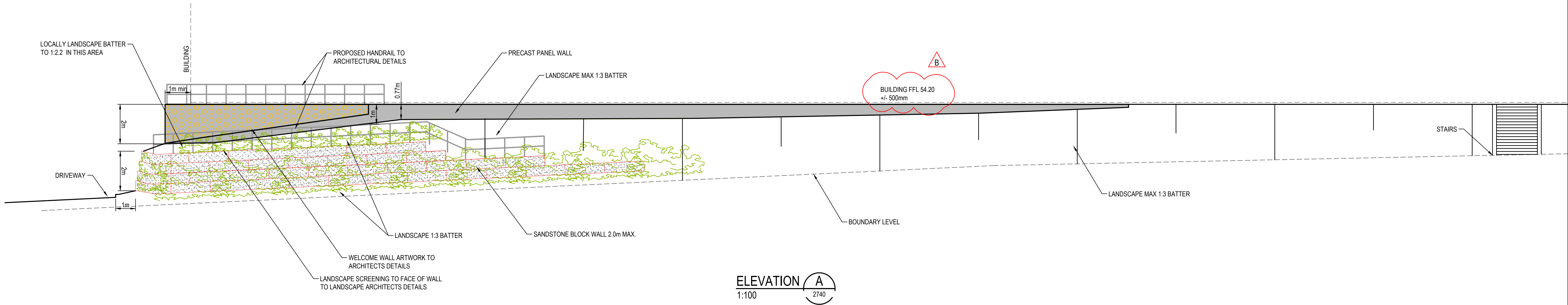


Civil Engineers and Project Managers
Level 7, 153 Walker Street
North Sydney NSW 2060
ABN 96 130 882 405
Tel: 02 9439 1777
Fax: 02 9923 1055
www.atl.net.au
info@atl.net.au

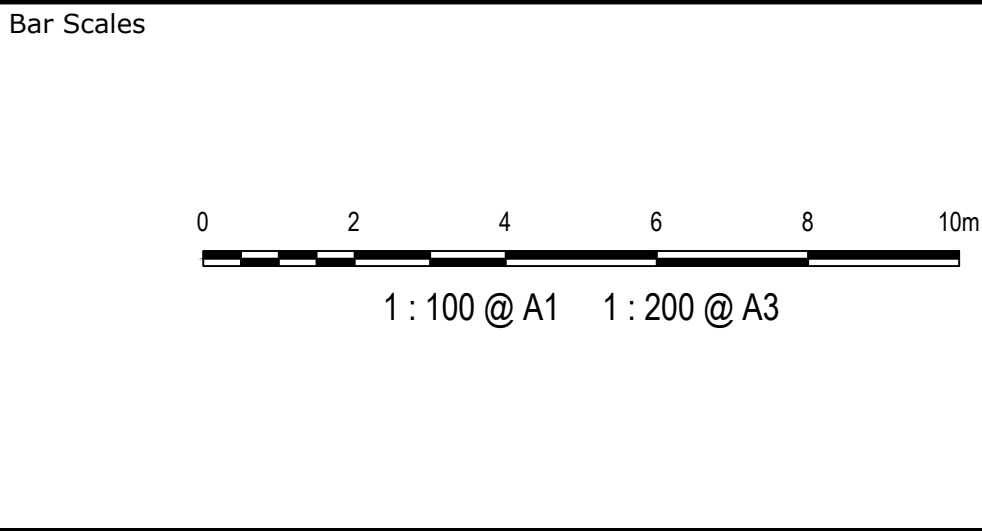
Status
FOR DA APPROVAL
NOT TO BE USED FOR CONSTRUCTION

A1

Project - Drawing No.
CV-AIE.B07.DA.2711-AT&L(G)



D	ISSUED FOR DA APPROVAL	13-02-25
C	ISSUED FOR DA APPROVAL	10-02-25
B	ISSUED FOR DA APPROVAL	24-01-25
A	ISSUED FOR DA APPROVAL	09-10-24
Issue	Description	Date



THIS DRAWING CANNOT BE COPIED OR REPRODUCED IN ANY FORM OR USED FOR ANY OTHER PURPOSE OTHER THAN THAT ORIGINALLY INTENDED WITHOUT THE WRITTEN PERMISSION OF AT&L

Client

Scales

1:100

Grid MGA

Height Datum AHD

Drawn

Designed

Checked

Approved

JB

JB

NT

DS

Project

ASPECT INDUSTRIAL ESTATE
MAMRE ROAD,
KEMPS CREEK
LOT 7

Title

SITE ELEVATIONS

Civil Engineers and Project Managers

Level 7, 153 Walker Street
North Sydney NSW 2060
ABN 96 130 882 405
Tel: 02 9439 1777
Fax: 02 9923 1055
www.atl.net.au
info@atl.net.au

Status

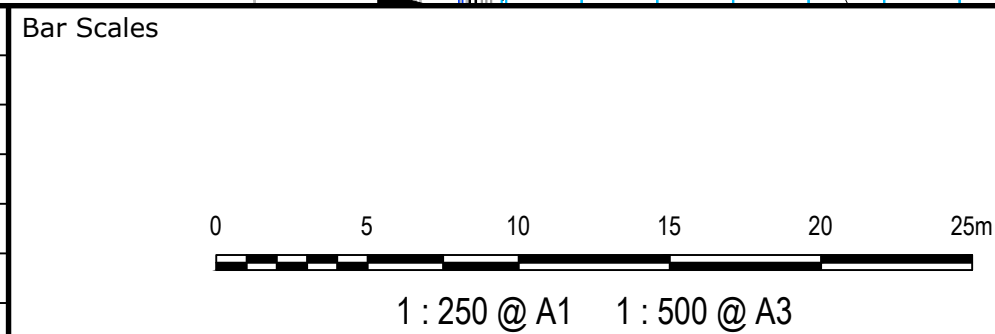
FOR DA APPROVAL
NOT TO BE USED FOR CONSTRUCTION

Project - Drawing No.

CV-AIE.B07.DA.2712-AT&L(C)

A1

E	ISSUED FOR DA APPROVAL	10-02-25
D	ISSUED FOR DA APPROVAL	09-10-24
C	ISSUED FOR DA APPROVAL	18-09-24
B	ISSUED FOR DA APPROVAL	26-02-24
A	ISSUED FOR DA APPROVAL	01-02-24
Issue	Description	Date




THIS DRAWING CANNOT BE
COPIED OR REPRODUCED IN
ANY FORM OR USED FOR ANY
OTHER PURPOSE OTHER THAN
THAT ORIGINALLY INTENDED
WITHOUT THE WRITTEN
PERMISSION OF AT&L



Scales	1:250	Drawn	JB
		Designed	JB
Grid	MGA	Checked	NT
Height Datum	AHD	Approved	DS


GDA2020

Project	ASPECT INDUSTRIAL ESTATE MAMRE ROAD, KEMPS CREEK LOT 7
Title	SITeworks AND STORMWATER DRAINAGE SHEET 2



Level 7, 153 Walker Street
North Sydney NSW 2060
ABN 96 130 882 405
Tel: 02 9439 1777
Fax: 02 9923 1055
www.atl.net.au
info@atl.net.au

Status

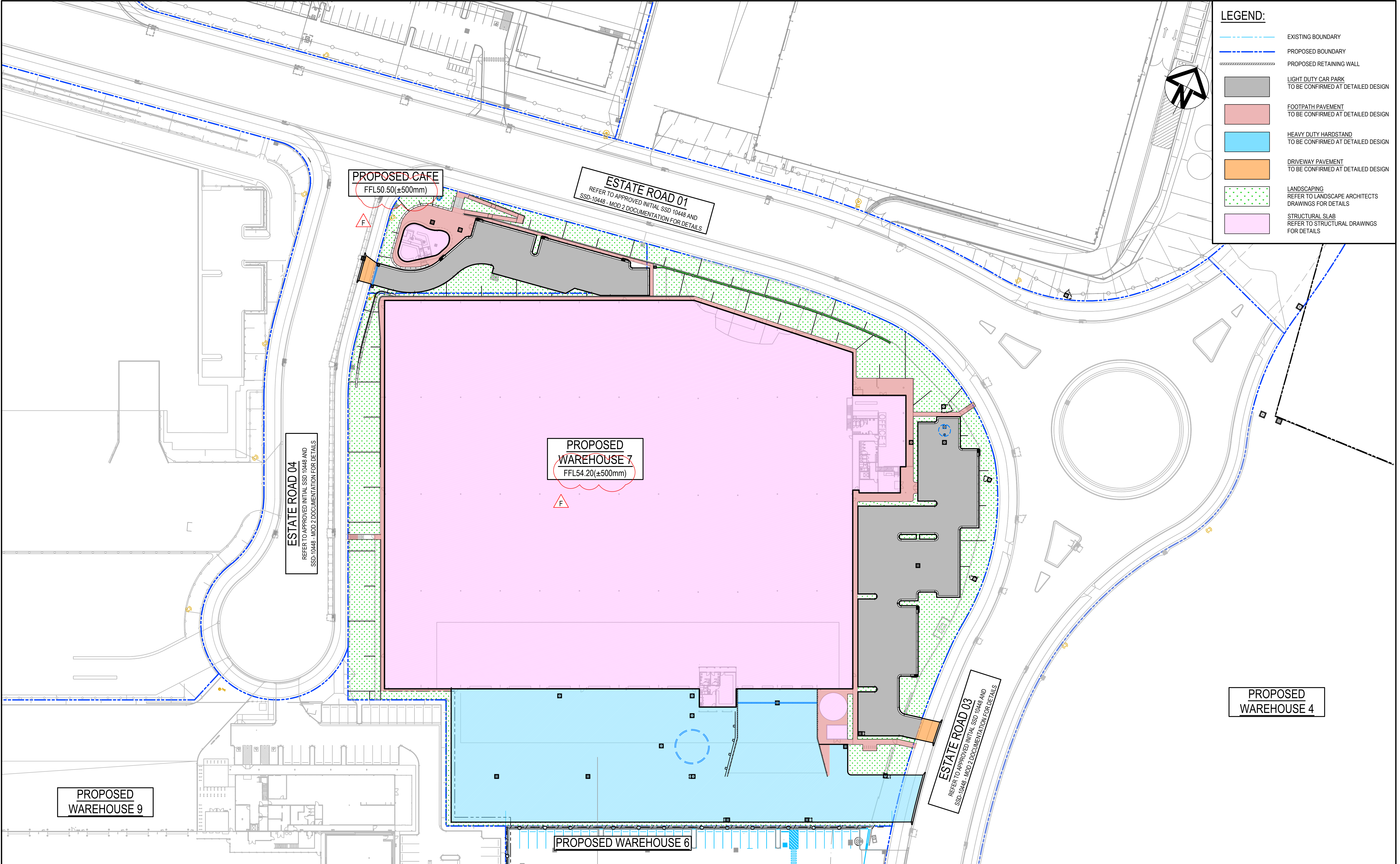
FOR DA APPROVAL

NOT TO BE USED FOR CONSTRUCTION

Project - Drawing No.

CV-AIE.B07.DA.2741-AT&L(E)

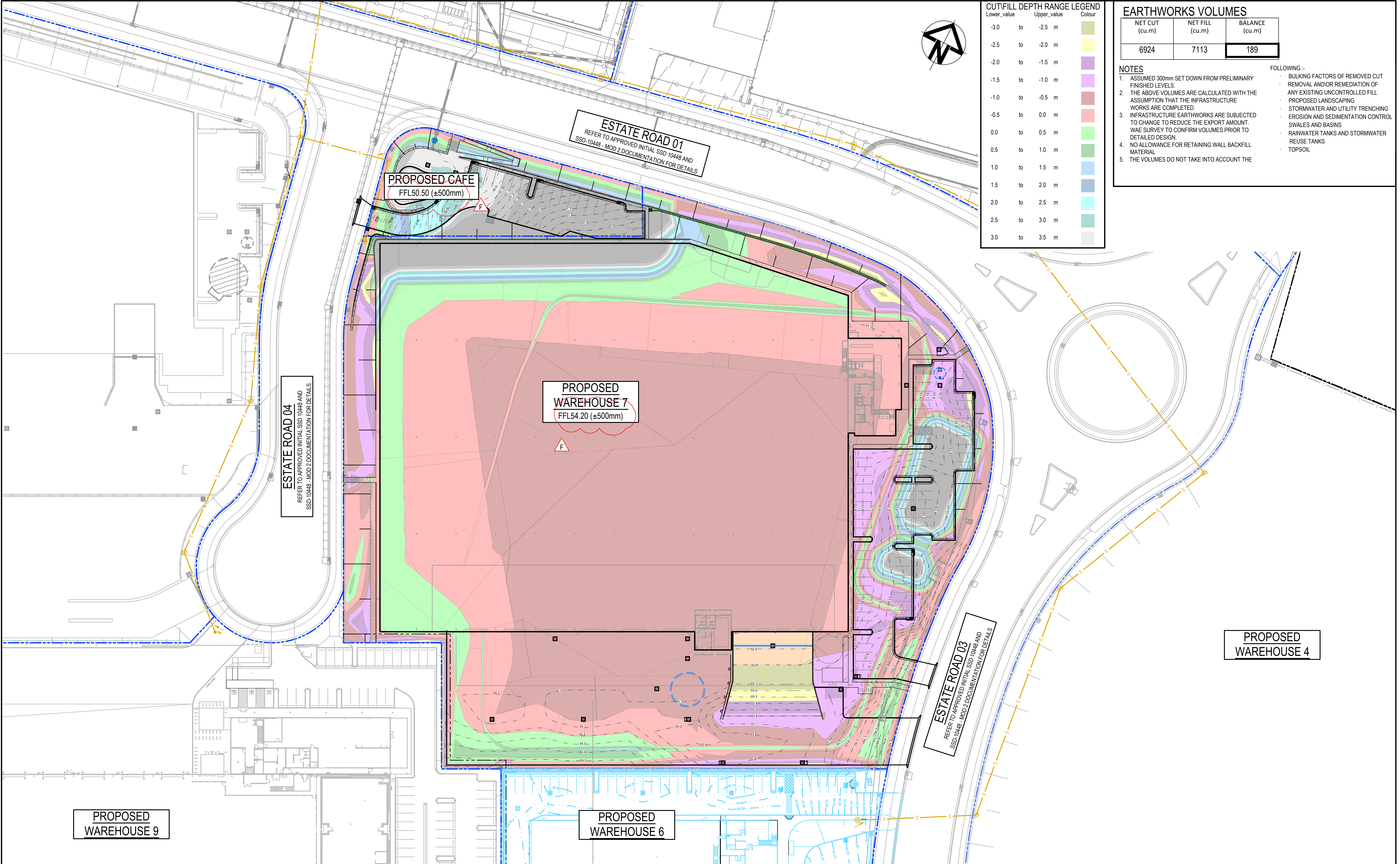
A1



LEGEND:

- EXISTING BOUNDARY
- PROPOSED BOUNDARY
- PROPOSED RETAINING WALL
- LIGHT DUTY CAR PARK
TO BE CONFIRMED AT DETAILED DESIGN
- FOOTPATH PAVEMENT
TO BE CONFIRMED AT DETAILED DESIGN
- HEAVY DUTY HARDSTAND
TO BE CONFIRMED AT DETAILED DESIGN
- DRIVEWAY PAVEMENT
TO BE CONFIRMED AT DETAILED DESIGN
- LANDSCAPING
REFER TO LANDSCAPE ARCHITECTS
DRAWINGS FOR DETAILS
- STRUCTURAL SLAB
REFER TO STRUCTURAL DRAWINGS
FOR DETAILS

<table border="1"> <tr> <th>Issue</th> <th>Description</th> <th>Date</th> </tr> <tr> <td>F</td> <td>ISSUED FOR DA APPROVAL</td> <td>13-02-25</td> </tr> <tr> <td>E</td> <td>ISSUED FOR DA APPROVAL</td> <td>10-02-25</td> </tr> <tr> <td>D</td> <td>ISSUED FOR DA APPROVAL</td> <td>11-10-24</td> </tr> <tr> <td>C</td> <td>ISSUED FOR DA APPROVAL</td> <td>09-10-24</td> </tr> <tr> <td>B</td> <td>ISSUED FOR DA APPROVAL</td> <td>26-02-24</td> </tr> <tr> <td>A</td> <td>ISSUED FOR DA APPROVAL</td> <td>01-02-24</td> </tr> </table>			Issue	Description	Date	F	ISSUED FOR DA APPROVAL	13-02-25	E	ISSUED FOR DA APPROVAL	10-02-25	D	ISSUED FOR DA APPROVAL	11-10-24	C	ISSUED FOR DA APPROVAL	09-10-24	B	ISSUED FOR DA APPROVAL	26-02-24	A	ISSUED FOR DA APPROVAL	01-02-24	<p>Bar Scales</p> <p>1 : 500 @ A1 1 : 1000 @ A3</p>		<p>THIS DRAWING CANNOT BE COPIED OR REPRODUCED IN ANY FORM OR USED FOR ANY OTHER PURPOSE OTHER THAN THAT ORIGINALLY INTENDED WITHOUT THE WRITTEN PERMISSION OF AT&L</p>		<p>Client</p>		<p>Scales</p> <p>1:500</p> <p>Grid MGA</p> <p>Height Datum AHD</p>		<p>Drawn JB</p> <p>Designed JB</p> <p>Checked NT</p> <p>Approved DS</p>		<p>Project</p> <p>ASPECT INDUSTRIAL ESTATE MAMRE ROAD, KEMPS CREEK LOT 7</p>		<p>Civil Engineers and Project Managers</p> <p>Level 7, 153 Walker Street North Sydney NSW 2060 ABN 96 130 882 405 Tel: 02 9439 1777 Fax: 02 9923 1055 www.atl.net.au info@atl.net.au</p>	
Issue	Description	Date																																			
F	ISSUED FOR DA APPROVAL	13-02-25																																			
E	ISSUED FOR DA APPROVAL	10-02-25																																			
D	ISSUED FOR DA APPROVAL	11-10-24																																			
C	ISSUED FOR DA APPROVAL	09-10-24																																			
B	ISSUED FOR DA APPROVAL	26-02-24																																			
A	ISSUED FOR DA APPROVAL	01-02-24																																			
						<p>Status</p> <p>FOR DA APPROVAL NOT TO BE USED FOR CONSTRUCTION</p>		<p>A1</p>		<p>Title</p> <p>PAVEMENT PLAN</p>		<p>Project - Drawing No.</p> <p>CV-AIE.B07.DA.2750-AT&L(F)</p>																									



CUT/FILL DEPTH RANGE LEGEND		
Lower_value	Upper_value	Colour
-3.0	to -2.5 m	Light Green
-2.5	to -2.0 m	Yellow
-2.0	to -1.5 m	Purple
-1.5	to -1.0 m	Pink
-1.0	to -0.5 m	Light Blue
-0.5	to 0.0 m	Light Green
0.0	to 0.5 m	Light Green
0.5	to 1.0 m	Light Green
1.0	to 1.5 m	Light Green
1.5	to 2.0 m	Light Green
2.0	to 2.5 m	Light Green
2.5	to 3.0 m	Light Green
3.0	to 3.5 m	Light Green

EARTHWORKS VOLUMES		
NET CUT (cu.m)	NET FILL (cu.m)	BALANCE (cu.m)
6924	7113	189

- NOTES**
1. ASSUMED 300mm SET DOWN FROM PRELIMINARY FINISHED LEVELS.
 2. THE ABOVE VOLUMES ARE CALCULATED WITH THE ASSUMPTION THAT THE INFRASTRUCTURE WORKS ARE COMPLETED.
 3. INFRASTRUCTURE EARTHWORKS ARE SUBJECTED TO CHANGE TO REDUCE THE EXPORT AMOUNT. WAE SURVEY TO CONFIRM VOLUMES PRIOR TO DETAILED DESIGN.
 4. NO ALLOWANCE FOR RETAINING WALL BACKFILL MATERIAL.
 5. THE VOLUMES DO NOT TAKE INTO ACCOUNT THE
- FOLLOWING:-**
- BULKING FACTORS OF REMOVED CUT
 - REMOVAL AND/OR REMEDIATION OF ANY EXISTING UNCONTROLLED FILL
 - PROPOSED LANDSCAPING
 - STORMWATER AND UTILITY TRENCHING
 - EROSION AND SEDIMENTATION CONTROL SWALES AND BASINS
 - RAINWATER TANKS AND STORMWATER REUSE TANKS
 - TOPSOIL

Issue	Description	Date
F	ISSUED FOR DA APPROVAL	13-02-25
E	ISSUED FOR DA APPROVAL	10-02-25
D	ISSUED FOR DA APPROVAL	11-10-24
C	ISSUED FOR DA APPROVAL	09-10-24
B	ISSUED FOR DA APPROVAL	26-02-24
A	ISSUED FOR DA APPROVAL	01-02-24

Bar Scales

0 10 20 30 40 50m

1 : 500 @ A1 1 : 1000 @ A3

THIS DRAWING CANNOT BE COPIED OR REPRODUCED IN ANY FORM OR USED FOR ANY OTHER PURPOSE OTHER THAN THAT ORIGINALLY INTENDED WITHOUT THE WRITTEN PERMISSION OF AT&L

Client

mirvac

Scales

1:500

Grid MGA

Height Datum AHD

GDA2020

Drawn JB

Designed JB

Checked NT

Approved DS

Project

ASPECT INDUSTRIAL ESTATE
MAMRE ROAD,
KEMPS CREEK
LOT 7

Title

BULK EARTHWORKS
CUT/FILL
PLAN

Civil Engineers and Project Managers

at&l

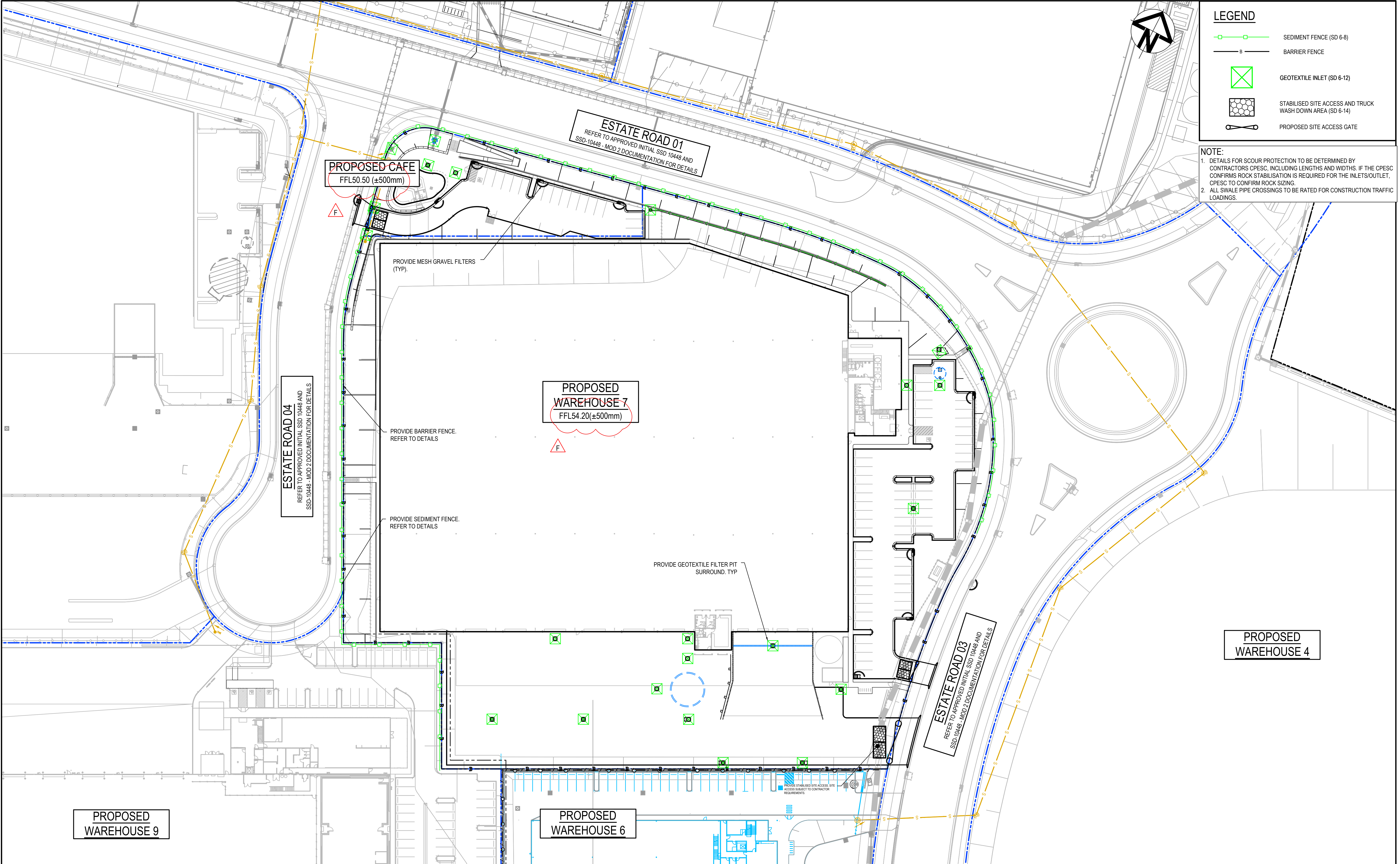
Level 7, 153 Walker Street
North Sydney NSW 2060
ABN 96 130 882 405
Tel: 02 9439 1777
Fax: 02 9923 1055
www.atl.net.au
info@atl.net.au

Status

FOR DA APPROVAL
NOT TO BE USED FOR CONSTRUCTION

Project - Drawing No.
CV-AIE.B07.DA.2760-AT&L(F)

A1



LEGEND

SEDIMENT FENCE (SD 6-8)

BARRIER FENCE

GEOTEXTILE INLET (SD 6-12)

STABILISED SITE ACCESS AND TRUCK WASH DOWN AREA (SD 6-14)

PROPOSED SITE ACCESS GATE

NOTE:

1. DETAILS FOR SCOUR PROTECTION TO BE DETERMINED BY CONTRACTORS CPESC, INCLUDING LENGTHS AND WIDTHS. IF THE CPESC CONFIRMS ROCK STABILISATION IS REQUIRED FOR THE INLETS/OUTLET, CPESC TO CONFIRM ROCK SIZING.
2. ALL SWALE PIPE CROSSINGS TO BE RATED FOR CONSTRUCTION TRAFFIC LOADINGS.

Issue	Description	Date
F	ISSUED FOR DA APPROVAL	13-02-25
E	ISSUED FOR DA APPROVAL	10-02-25
D	ISSUED FOR DA APPROVAL	11-10-24
C	ISSUED FOR DA APPROVAL	09-10-24
B	ISSUED FOR DA APPROVAL	26-02-24
A	ISSUED FOR DA APPROVAL	01-02-24

Bar Scales

01020304050m

1 : 500 @ A1 1 : 1000 @ A3

THIS DRAWING CANNOT BE COPIED OR REPRODUCED IN ANY FORM OR USED FOR ANY OTHER PURPOSE OTHER THAN THAT ORIGINALLY INTENDED WITHOUT THE WRITTEN PERMISSION OF AT&L

Client

mirvac

Scales

1:500

Grid

MGA

Height Datum

AHD

Drawn

JB

Designed

JB

Checked

NT

Approved

DS

Project

ASPECT INDUSTRIAL ESTATE
MAMRE ROAD,
KEMPS CREEK
LOT 7

Title

EROSION AND SEDIMENT
CONTROL PLAN

Civil Engineers and Project Managers

at&l

Level 7, 153 Walker Street
North Sydney NSW 2060
ABN 96 130 882 405
Tel: 02 9439 1777
Fax: 02 9923 1055
www.atl.net.au
info@atl.net.au

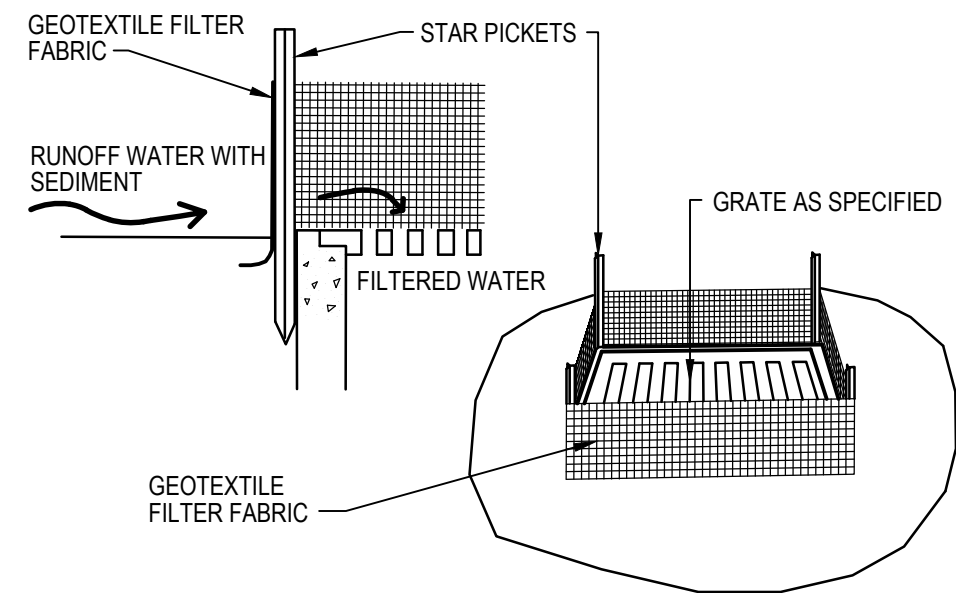
Status

FOR DA APPROVAL
NOT TO BE USED FOR CONSTRUCTION

Project - Drawing No.

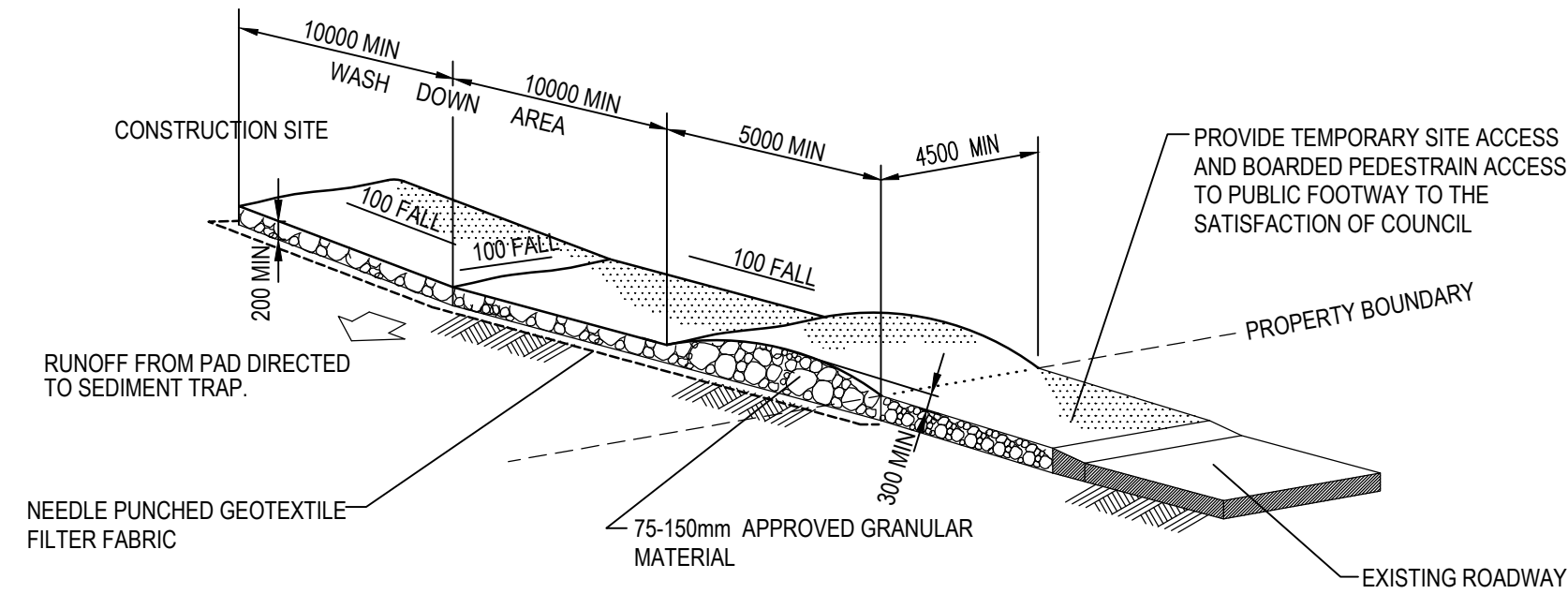
CV-AIE.B07.DA.2770-AT&L(F)

A1



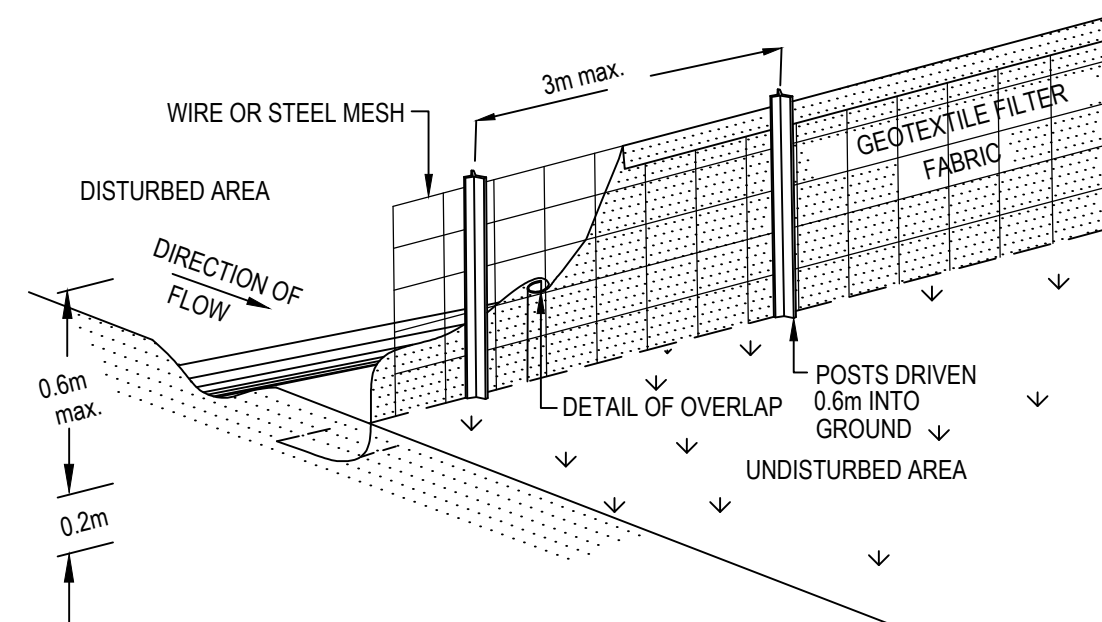
GEOTEXTILE FILTER PIT SURROUND

NTS



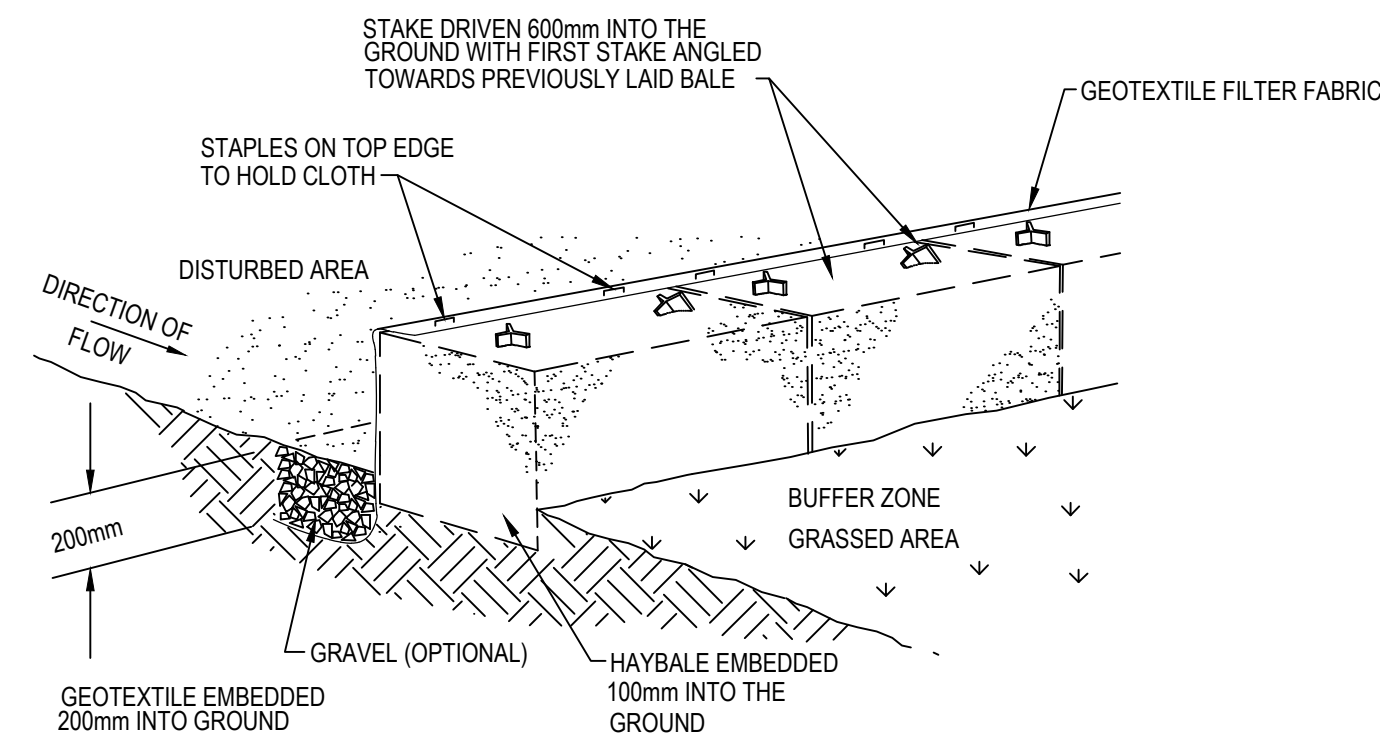
STABILISED SITE ACCESS AND TRUCK WASH DOWN AREA

NTS



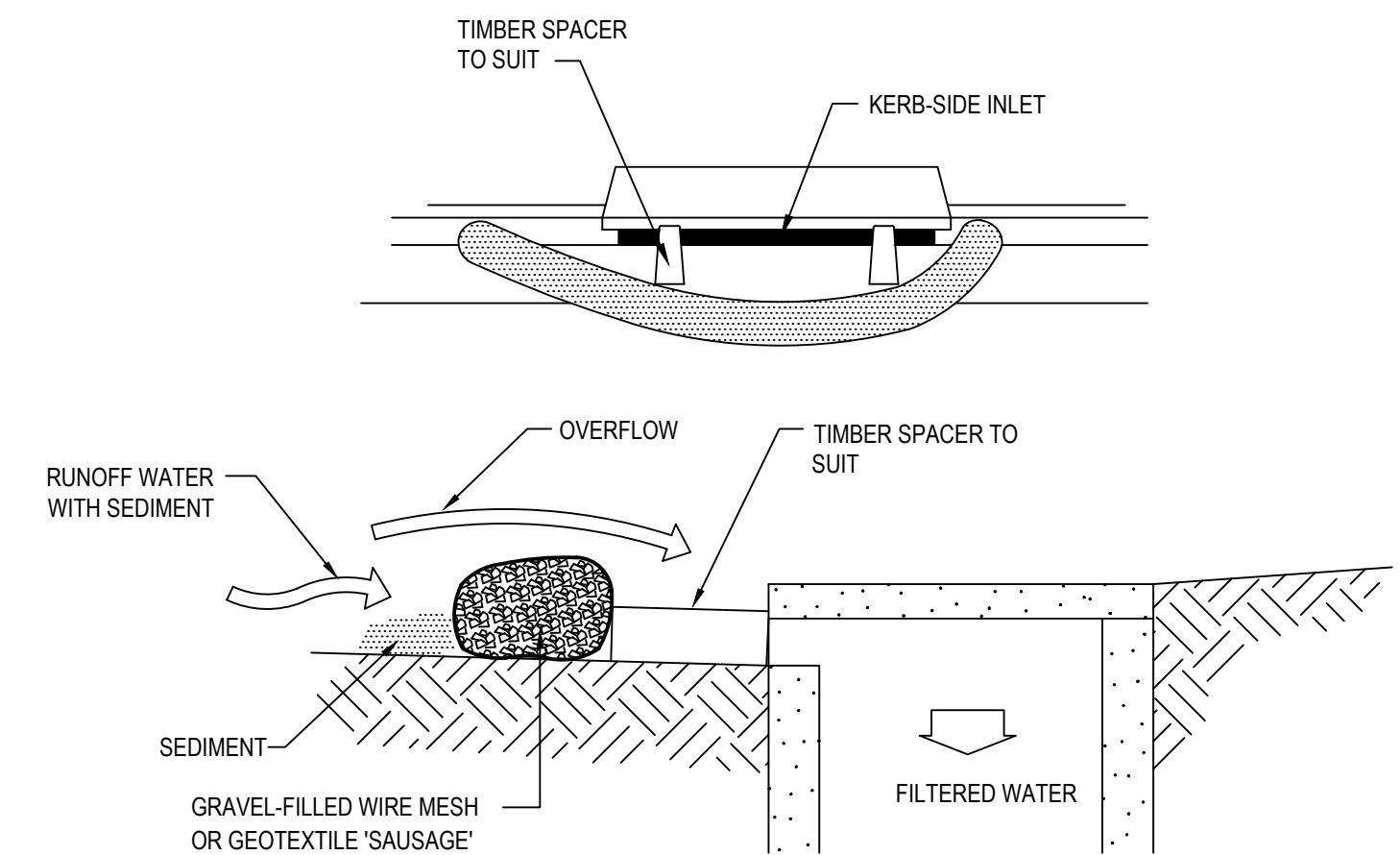
SEDIMENT FENCE

NTS



HAYBALE AND GEOTEXTILE SEDIMENT FILTER

NTS



MESH AND GRAVEL INLET FILTER

NTS

			Bar Scales	THIS DRAWING CANNOT BE COPIED OR REPRODUCED IN ANY FORM OR USED FOR ANY OTHER PURPOSE OTHER THAN THAT ORIGINALLY INTENDED WITHOUT THE WRITTEN PERMISSION OF AT&L	Client <div></div>	<div><div>Scales</div><div>NTS</div><div>Grid</div><div>MGA</div><div>Height Datum</div><div>AHD</div></div> <div></div>	<div><div>Drawn</div><div>JB</div><div>Designed</div><div>JB</div><div>Checked</div><div>NT</div><div>Approved</div><div>DS</div></div>	Project ASPECT INDUSTRIAL ESTATE MAMRE ROAD, KEMPS CREEK LOT 7	<div><div>Level 7, 153 Walker Street North Sydney NSW 2060 ABN 96 130 882 405 Tel: 02 9439 1777 Fax: 02 9923 1055 www.atl.net.au info@atl.net.au</div></div>	Status FOR DA APPROVAL NOT TO BE USED FOR CONSTRUCTION Project - Drawing No. CV-AIE.B07.DA.2771-AT&L(B)	A1
B	ISSUED FOR DA APPROVAL		26-02-24								
A	ISSUED FOR DA APPROVAL		01-02-24								
Issue	Description		Date								